

OCAM

4X4
ACCESSORIES

INSTALLATION INSTRUCTIONS

PART NUMBER: BRB2-Colorado-16

APPLICATION: Holden Colorado 2012 on

FITTING TIME: 45 min



OCAM 4x4 Accessories
31 Shirley Way, Epping, VIC 3076
Telephone (03) 9357-0306
Email: hello@ocam.com.au
ABN: 33166112278

IMPORTANT INFORMATION

- Always wear safety glasses and hearing protection.
- Make sure work area is kept clean at all times.
- Check that all components, as listed, are present.
- Thoroughly read all instructions.
- This product or its fasteners must not be modified in any way.
- These instructions are accurate as at the revision date and do not take into account any changes made by the vehicle manufacturer to vehicle design after the revision date, or other accessories that are or have been fitted to the vehicle.
- It is the responsibility of the installer to confirm correct operation/clearance of all components.
- All holes drilled must have all burrs and swarf removed then coated with a suitable rust preventative paint.
- Ensure that all hardware is fastened to torque list as detailed in these instructions.
- On completion of the job, these instructions are to be given to the customer.

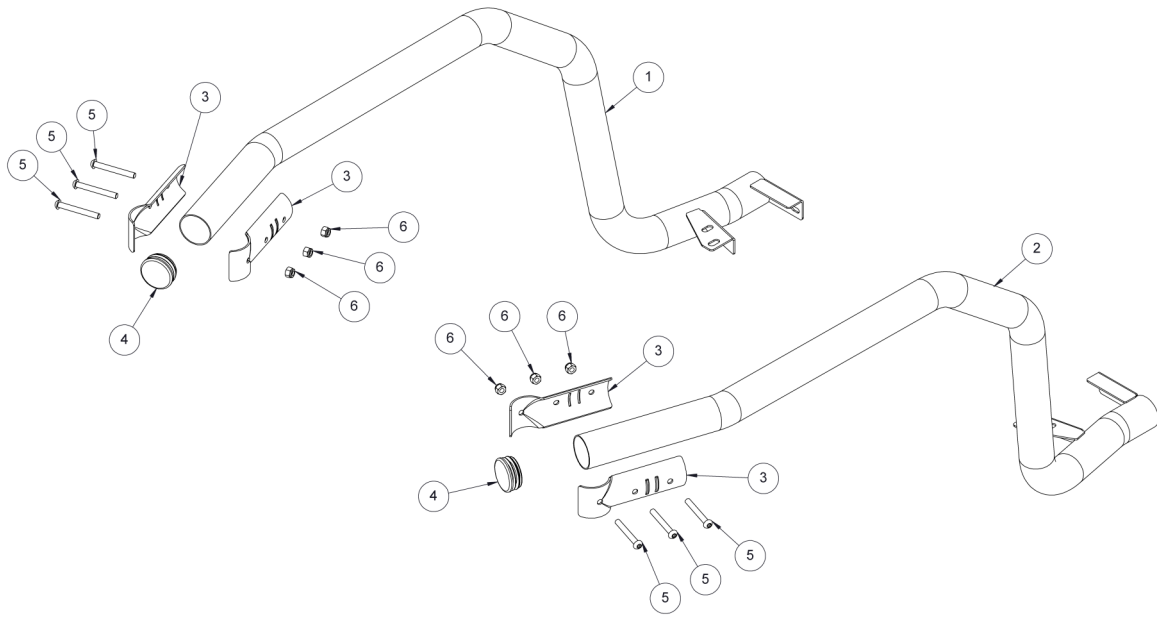
PRODUCT CARE

- To maintain the appearance of the product, wash and dry regularly using a quality car wash.
- The product should be periodically checked for tightness.

Torque Settings		
BOLT SIZE mm	TORQUE Nm	TORQUE ft.lb
M5	5	4
M6	9	7
M8	22	16
M10	44	32
M12	77	57

Tools needed

- | | |
|---|---|
| <ul style="list-style-type: none"> • Basic tool kit • Drill • 8.5mm drill bit • Rust preventative | <ul style="list-style-type: none"> • Round file • Masking tape • Level • Clamps |
|---|---|



BOM

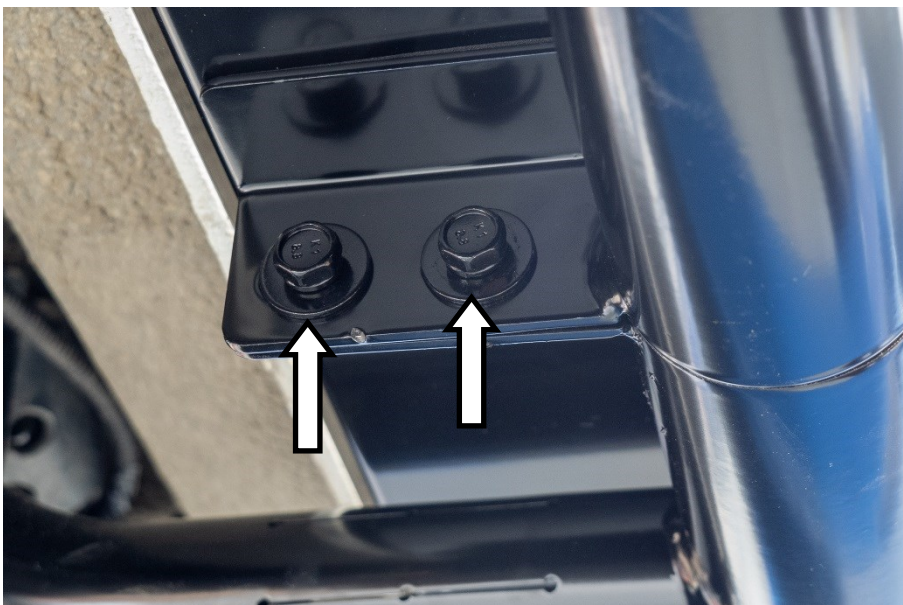
Item	Part number	Description	Qty
1		Brush bar right hand	1
2		Brush bar left hand	1
3		Brush bar clamp	4
4		End plug 63mm	2
5		Button head bolt M8 x 80mm	6
6		Nyloc nut M8	6



1. With the vehicle in a suitable location, start by applying masking tape to the outer loops of the bull bar. This is to protect the finish.



2. Remove the front two fasteners securing the tread plate to the step return. Keep the fasteners.



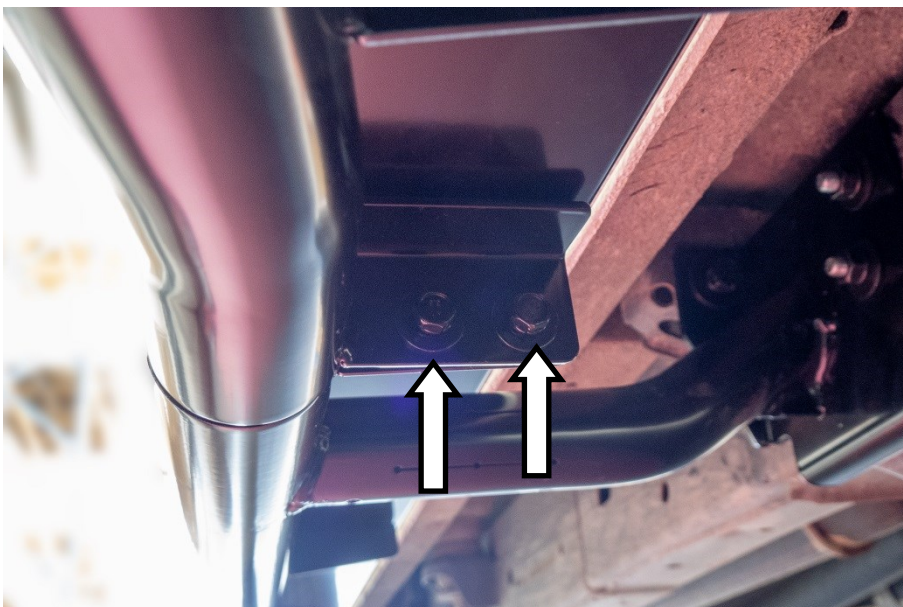
3. Remove the fasteners that attach the step return to the side step. Keep the fasteners.



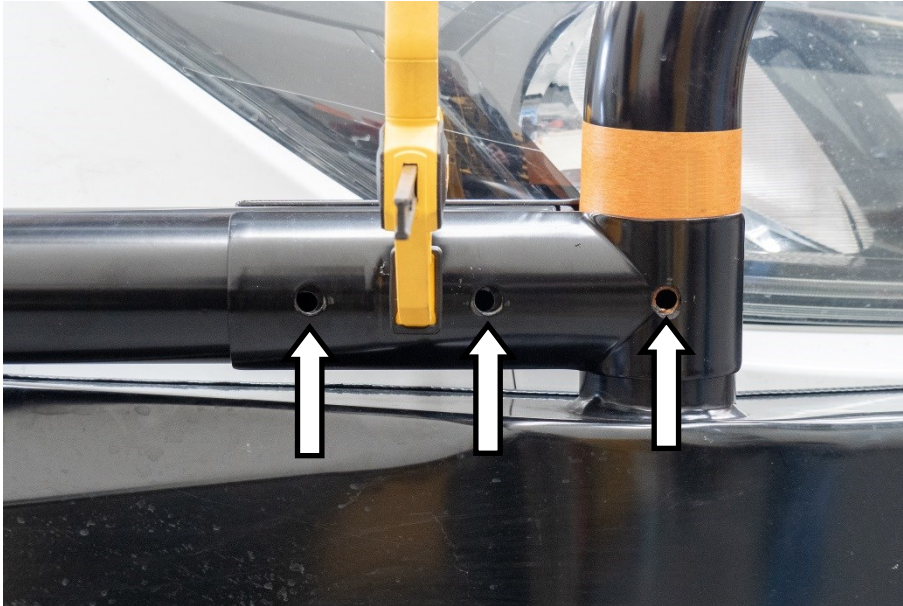
4. Remove the step return from the side step.



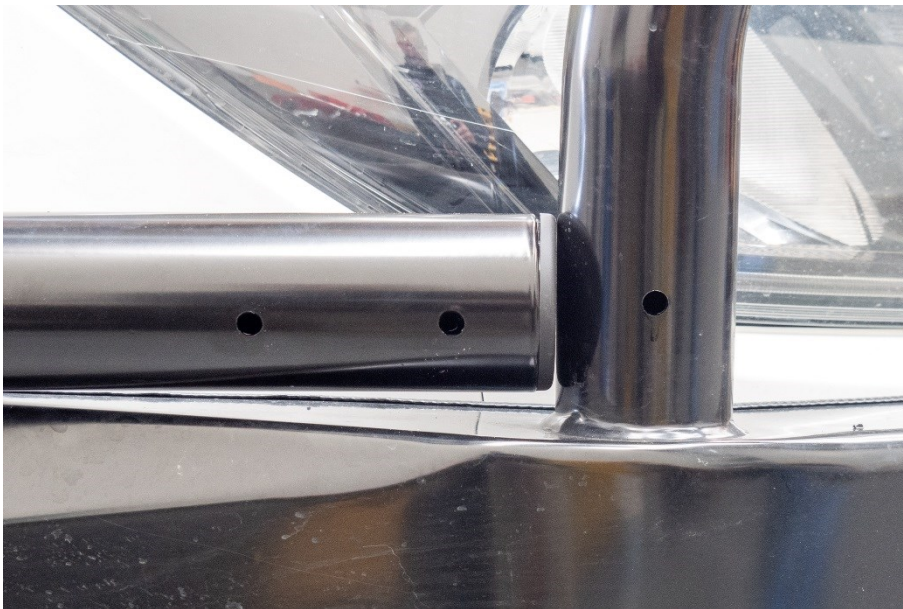
5. Fit the brush bar to the side step.
6. Use a level to ensure the brush bar is parallel to the side steps.
7. With the brush bar correctly positioned, clamp the brush bar to the bull bar.



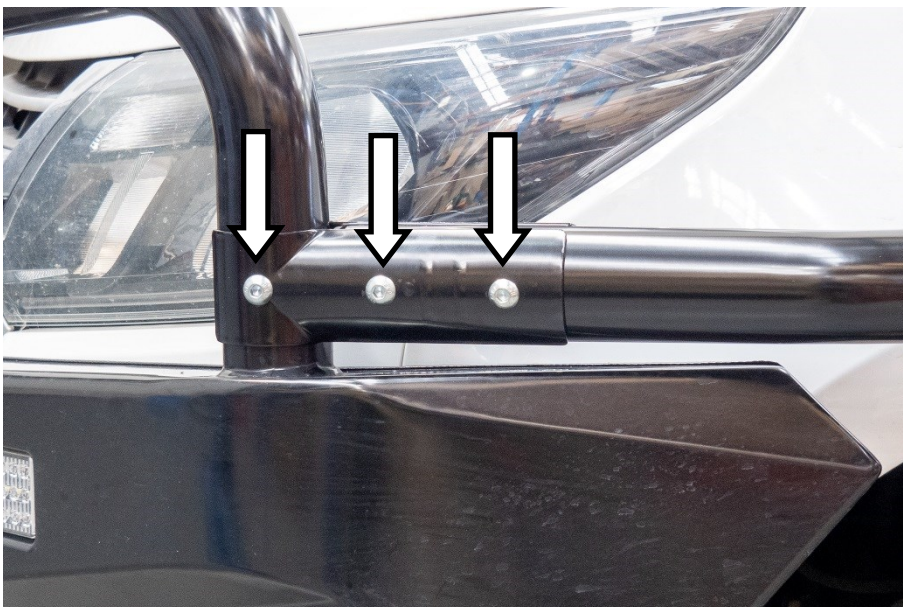
8. Using the fasteners that attached the step return, secure the brush bar to the side step.



9. Use the holes in the brush bar clamps as a guide, with a 8.5mm drill bit, drill holes in the brush bar and outer loop of the bull bar.



10. Remove the brush bar clamps and masking tape.
11. File the holes to remove any burrs.
12. Paint the drilled holes to prevent them from rusting.



13. Clamp the brush bars to the bull bar using the supplied fasteners.



14. Repeat for the opposite side.

