



RAKTANK  50
WATER TANK



Fit Kit for:
Offroad Animal V2/Front
Runner and Prinsu Racks
and
Yakima and Wedgetail Racks

Part Number # RTFKORAV2
RTFKYAK

Prior to use, it recommended that the tank be thoroughly washed with mild dishwashing detergent and allow to air dry completely.

Important Safety Information:

1. The water tank must be mounted completely flat on the mounting surface (slats and/or cross bars).
2. For your safety, only use a roof rack or cross bars that are approved for your vehicle. The (off-road) dynamic weight rating must be greater than the weight of the water tank at full capacity (including mounting kit and traction boards). Always consult your vehicle and roof rack manuals and ensure you are following their advice regarding on-road and off-road load limits.
3. Periodically check that all nuts and bolts that secure your water tank to your vehicle are torqued to specification and in good repair. Note: Large ambient temperature fluctuations can result in loss of tension of the mounting hardware.
4. Improper installation or use of your water tank may result in serious injury or damage. You will need to follow these installation instructions carefully to ensure proper installation on your vehicle and safe use of your water tank.
 - a. If the tank has been fitted to a vehicle that has been in an accident, the tank and mounting hardware need to be inspected before next use. For any queries regarding the ability to use the product after an accident, contact Pak Offroad at info@pakoffroad.com
5. Make sure that you give due consideration to the change in your vehicle height and driving behaviour.

The manufacturer is not liable for any damage or accident that may occur as a result of a non-compliance with these usage instructions, modifications made to parts or the usage of any parts other than the manufacturer's original parts. The warnings, cautions and instructions in this document can't cover every possible situation, so it is understood by the operator that common sense and caution must be applied.

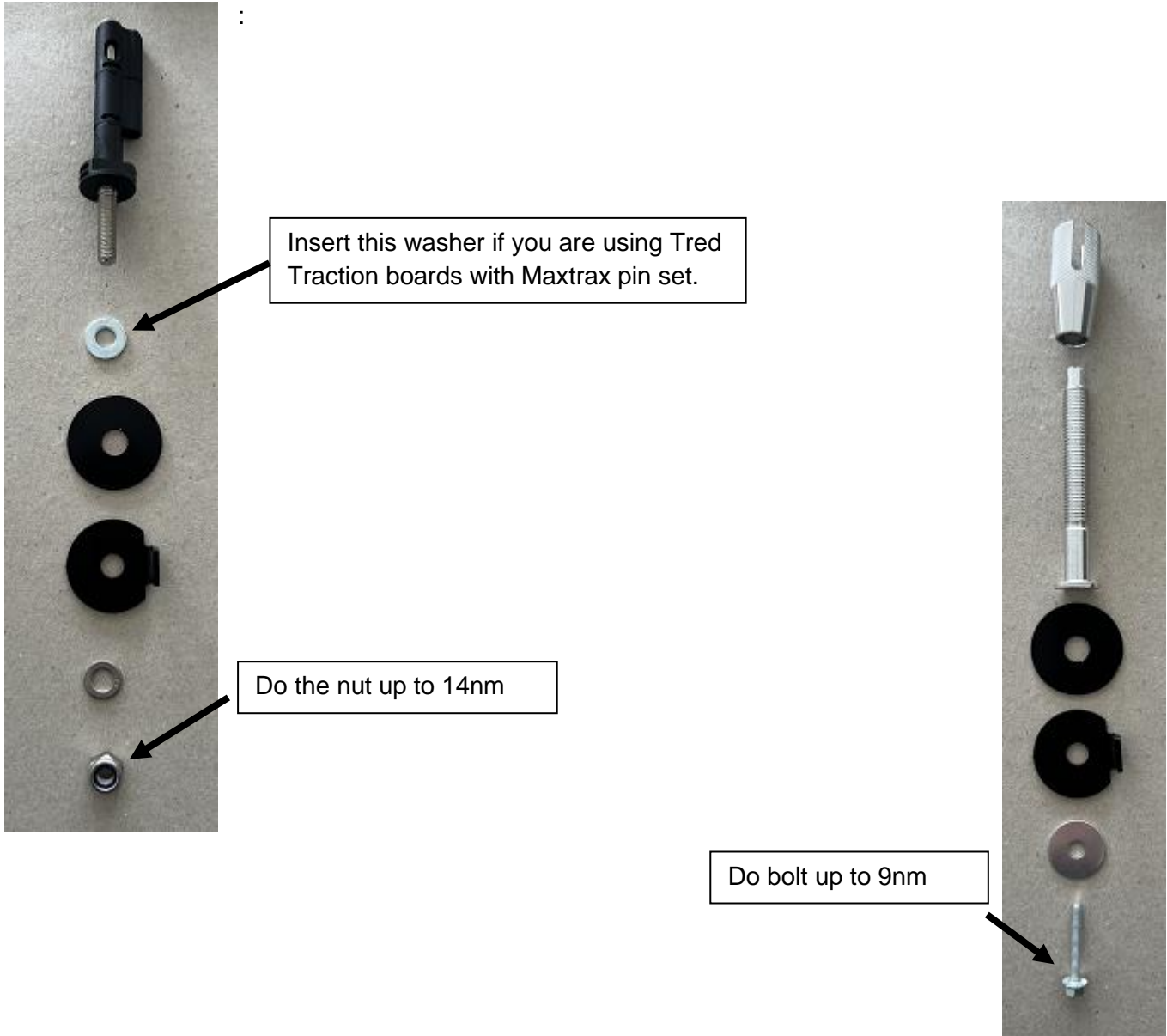
The manufacturer's warranty covers manufacturing faults and lasts three (3) years within regular use. It is only valid if the instructions and recommendations in this document are adhered to and only applies to the first owner.

Installation of the fit kit:

Step 1: Installation of the mounting pins for the traction boards to the tank.

- Lay the tank on an easy to reach table at a good working height.
- Follow the exploded view of the mounting of the required pins.
- Please note: **Spending the extra time to make sure that the pins are correctly aligned and that the traction boards can be removed easily is beneficial.**

Maxtrax Mounting Pins (Part Number # MTXMPS40) exploded view:



Tred mounting pins exploded view:



Please have the tongue of the bottom lock washer facing upwards

Your traction boards should look like the image below:



Step 2: Mounting the tank to the Roof Rack:

- Place the tank on the rack and align the tank with as many slots in the rack possible, while doing this, try to use as many of the east/west baffle mounts as possible. These are the strongest mount points on the tank.
- Using the supplied bolts in the fit kit, place the bolts into the slots of the rack. Use all 4 backing plates where possible on the tank.



- You will see the ideal arrangement of the backing plates for the tank in the picture.

- Once you have lined up these baffles, make sure that the bolts are central to the baffle hole and that the bolts are not touching the tank in any way.
- Fit the supplied M8/M10 washers and the nyloc nuts and then do up to 12NM/14NM.
- Once you have fitted the washes and nuts allow to sit and check tension over the bolts again. You will need to check the tension of the nuts after installation. This should be done periodically. **Large ambient temperature fluctuations can result in loss of tension of the mounting hardware, so check the tension of the mounts.**
- **If fitting this for a customer, please remind them of this requirement and supply a copy of the user manual to them and check the tension of the fasteners on a regular basis.**
- Place the traction boards on the top of the tank and installation will be complete.
- Any questions, email info@pakoffroad.com.au