

OCAM

4X4
ACCESSORIES

INSTALLATION INSTRUCTIONS

PART NUMBER: SS2-Colorado-16

APPLICATION: Holden Colorado 2012 on, Isuzu D-Max 2012—2020

FITTING TIME: 1 hour



OCAM 4x4 Accessories
31 Shirley Way, Epping, VIC 3076
Telephone (03) 9357-0306
Email: hello@ocam.com.au
ABN: 33166112278

IMPORTANT INFORMATION

- Always wear safety glasses and hearing protection.
- Make sure work area is kept clean at all times.
- Check that all components, as listed, are present.
- Thoroughly read all instructions.
- This product or its fasteners must not be modified in any way.
- These instructions are accurate as at the revision date and do not take into account any changes made by the vehicle manufacturer to vehicle design after the revision date, or other accessories that are or have been fitted to the vehicle.
- It is the responsibility of the installer to confirm correct operation/clearance of all components.
- All holes drilled must have all burrs and swarf removed then coated with a suitable rust preventative paint.
- Ensure that all hardware is fastened to torque list as detailed in these instructions.
- On completion of the job, these instructions are to be given to the customer.

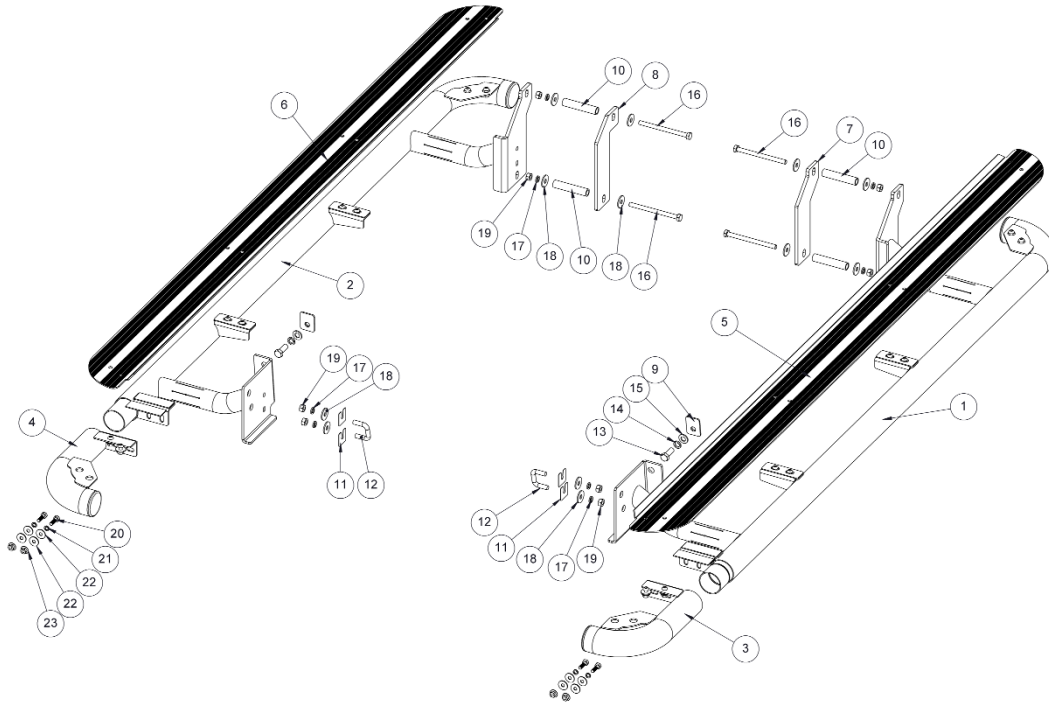
PRODUCT CARE

- To maintain the appearance of the product, wash and dry regularly using a quality car wash.
- The product should be periodically checked for tightness.

Torque Settings		
BOLT SIZE mm	TORQUE Nm	TORQUE ft.lb
M5	5	4
M6	9	7
M8	22	16
M10	44	32
M12	77	57

Tools needed

- Basic tool kit



BOM

Item	Part number	Description	Qty
1	200305166	Side step LHS	1
2	200305167	Side step RHS	1
3		Side step return LH	1
4		Side step return RH	1
5		Step tread plate LH	1
6		Step tread plate RH	1
7	200305317	Spacer plate LHS	1
8	200305318	Spacer plate RHS	1
9	200305319	Nut plate M12	2
10	200314818	Crush tube	4
11	200193009	M10 plastic clip	4
12	200069775	U-Bolt M10	2
13	3002805	Hex bolt M12 x 30mm	2
14	3000171	Spring washer M12	2
15	3000333	Flat washer M12	2
16	3002328	Hex bolt M10 x 130mm	4
17	3000160	Spring washer M10	8
18	3000245	Flat washer M10	12
19	3001491	Hex nut M10	8
20		Hex bolt M8 x 25mm	4
21		Spring washer M8	4
22		Flat washer M8	8
23		Flange nut M8	4



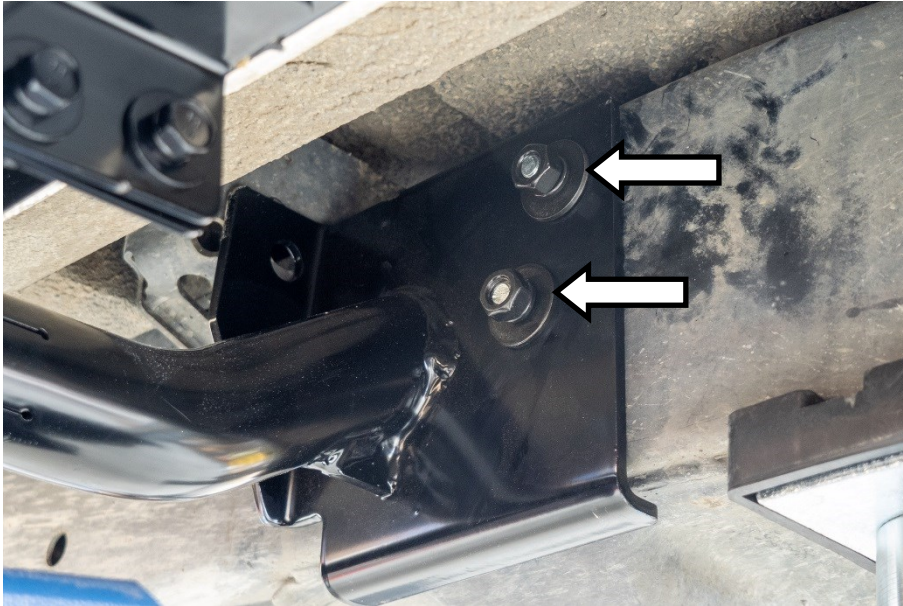
1. Park the vehicle in a suitable location. Where fitted, remove the OE side steps.



2. At the front of the vehicle insert a U-bolt (item # 12) into the lower slot and out through the hole above.



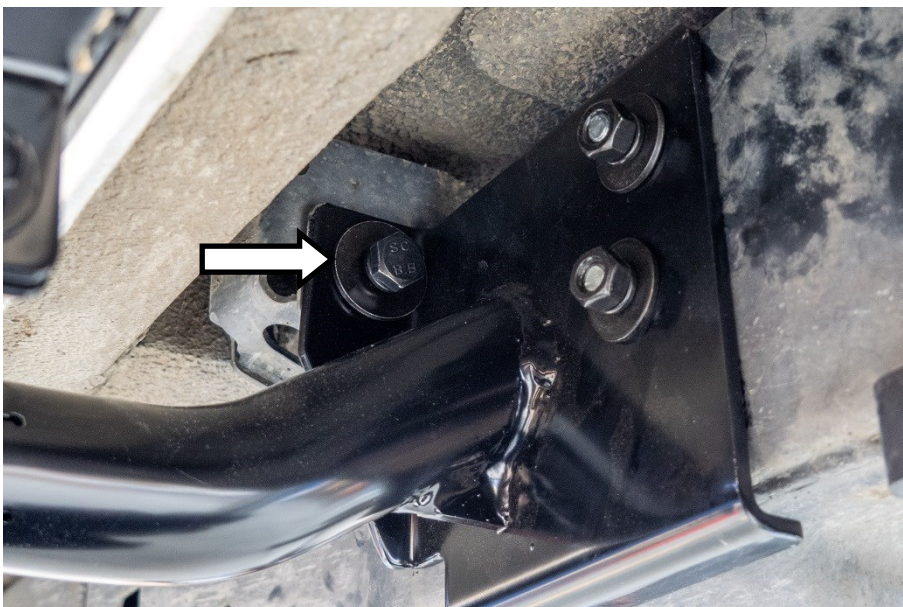
3. Use the plastic clips (item # 11) to hold the U-bolt in place.



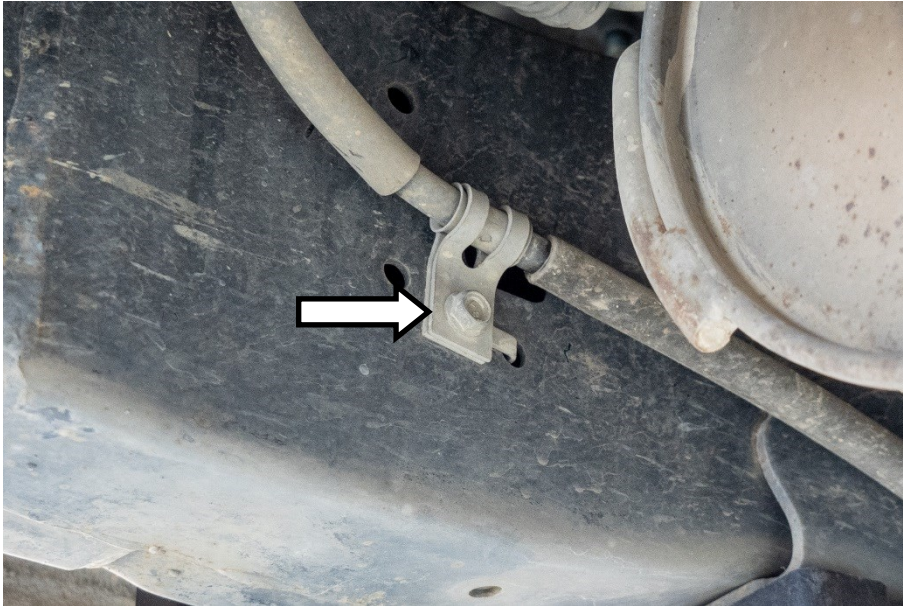
4. Lift the side step into place, secure front of the step using the previously installed U-bolt, M10 spring washers, flat washers and hex nuts. Leave loose.



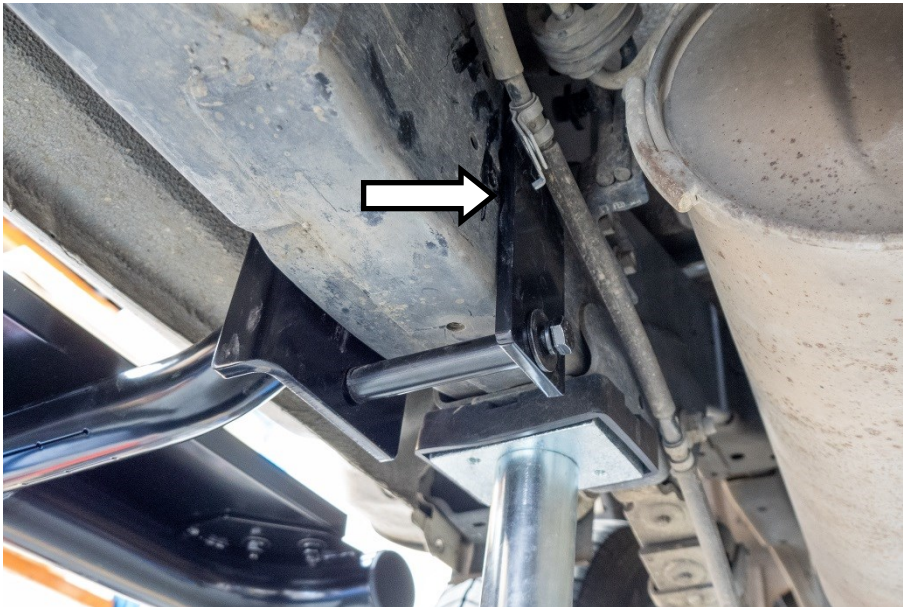
5. Insert one of the M12 nut plates (item # 9) into the lower hole in the chassis bracket.



6. Secure the front mount to the chassis bracket using a M12 x 30mm hex bolt, M12 spring and flat washer. Do not tighten yet.



7. Remove the bolt from the hand-brake cable at the rear.



8. For the rear right hand side, use the RH spacer plate (item # 8), M10 x 130mm hex bolts, crush tubes (item # 10), M10 spring washers, flat washers and M10 hex nuts to secure to the rear mount of the side step.



9. With the side step fitted to the vehicle, tighten the front mount first, then with the step parallel to the sill of the vehicle, tighten the rear mount.



10. Repeat steps 2 through 7 for the left hand side front mount.



11. At the rear left hand side, remove the handbrake cable fastener.



12. Unclip the hard line bracket from the chassis rail.



13. Position the left hand spacer plate (item # 7) between the hard lines and the chassis.



14. Secure to the rear bracket using M10 x 130mm hex bolts, crush tubes (item # 10), M10 spring washers, flat washers and M10 hex nuts.



15. With the left hand side step fitted to the vehicle, tighten the front mount first, then with the step parallel to the sill of the vehicle, tighten the rear mount.