



INSTALLATION INSTRUCTIONS

PART NUMBER: SS2-RANGER-23

APPLICATION: FORD RANGER PY DUAL CAB, VW AMAROK NF DUAL CAB

FITTING TIME: 90 min



OCAM 4x4 Accessories
31 Shirley Way, Epping, VIC 3076
Telephone (03) 9357-0306
Email: hello@ocam.com.au
ABN: 33166112278

IMPORTANT INFORMATION

- Always wear safety glasses and hearing protection.
- Make sure work area is kept clean at all times.
- Check that all components, as listed, are present.
- Thoroughly read all instructions.
- This product or its fasteners must not be modified in any way.
- These instructions are accurate as at the revision date and do not take into account any changes made by the vehicle manufacturer to vehicle design after the revision date, or other accessories that are or have been fitted to the vehicle.
- It is the responsibility of the installer to confirm correct operation/clearance of all components.
- All holes drilled must have all burrs and swarf removed then coated with a suitable rust preventative paint.
- Ensure that all hardware is fastened to torque list as detailed in these instructions.
- On completion of the job, these instructions are to be given to the customer.

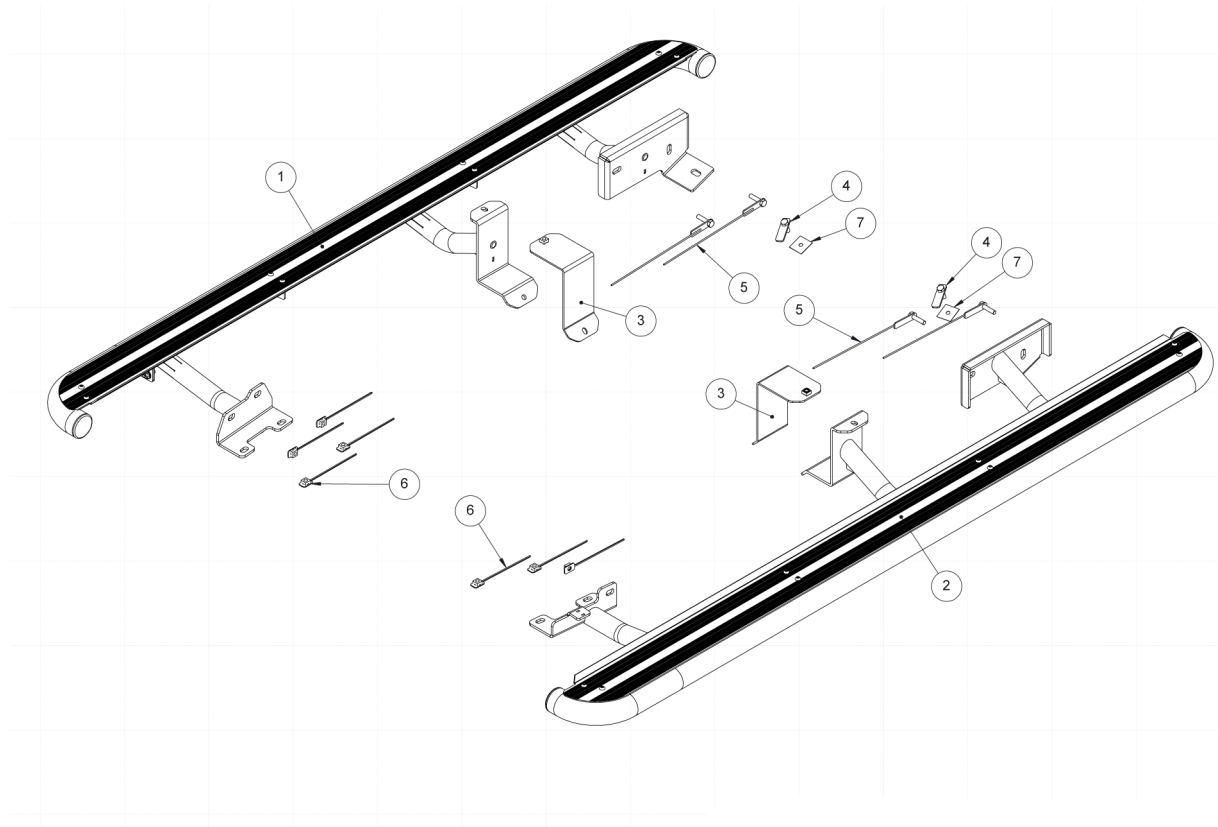
PRODUCT CARE

- To maintain the appearance of the product, wash and dry regularly using a quality car wash.
- The product should be periodically checked for tightness.

Torque Settings		
BOLT SIZE mm	TORQUE Nm	TORQUE ft.lb
M5	5	4
M6	9	7
M8	22	16
M10	44	32
M12	77	57

Tools Required

1. Metric socket and spanners
2. Torque wrench

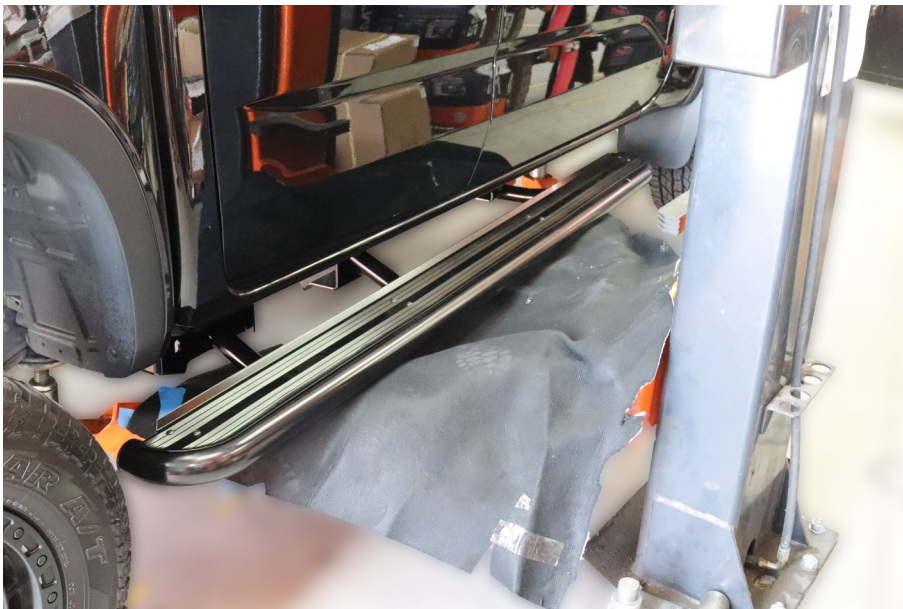


BOM

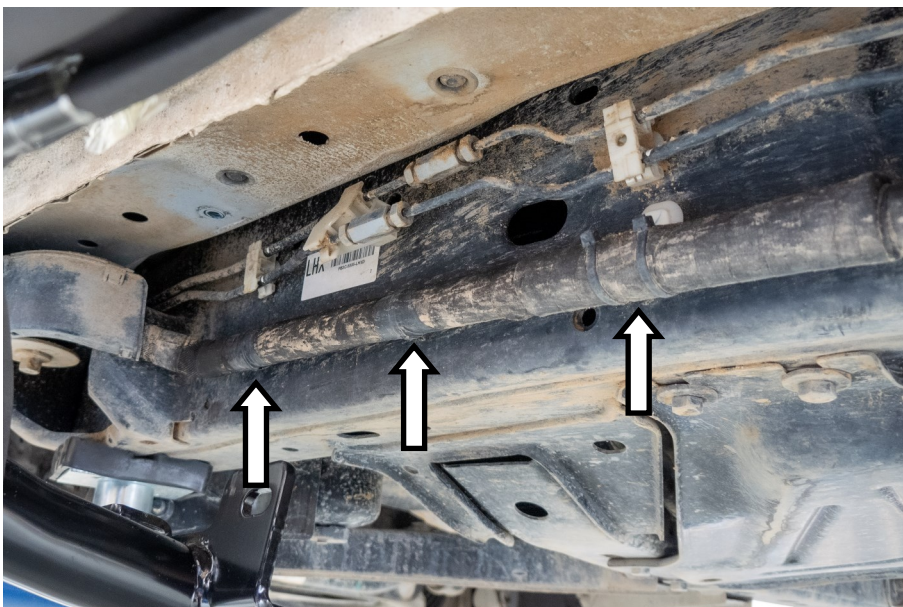
Item	Part number	Description	Qty
1	200487480	Side step assembly RH	1
2	200487479	Side step assembly LH	1
3	200490105	Middle mount clamp plate	2
4	200011354	T-Bolt M10 x 35mm	2
5	200440860	Bolt on wire M10 x 35mm	4
6		Nut plate M10 x 170mm	7
7	TY000506	PVC Bolt retainer M10	2
8	3002702	M10 x 1.5 x 30mm Hex bolt	10
9		M10 x 1.5 x 30mm Button head bolt	1
10	3000160	M10 Spring washer	17
11	3000245	M10 Flat washer	19
12	3004191	M10 x 1.5 Hex nut	8



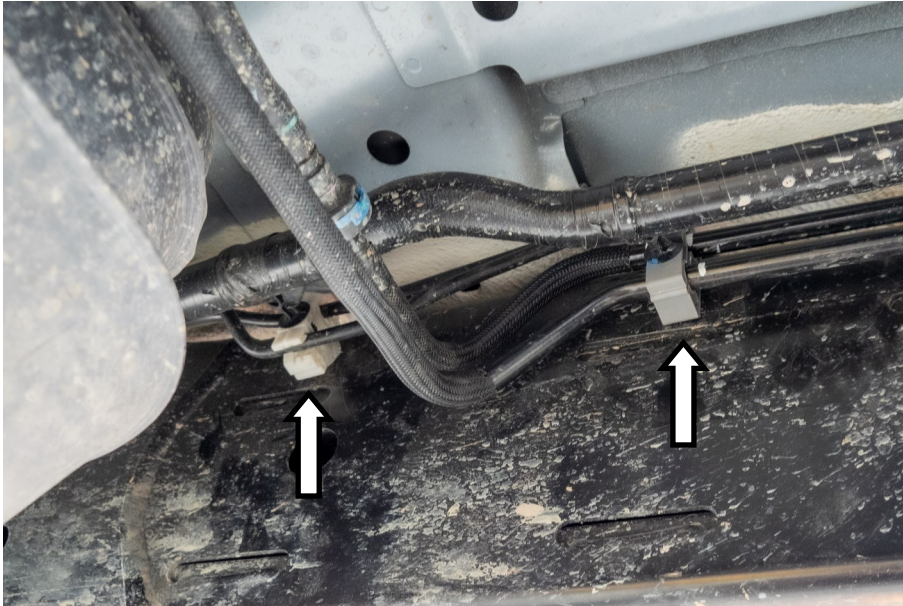
1. Locate the vehicle in an area suitable to allow access to the underside.



2. Unwrap the steps, check that all parts are present and are free from any damage.
3. Place the steps next to the side of the vehicle.



4. On the left hand side, carefully pry the loom away from the chassis.



5. Also on the left hand side, on the inside of the chassis, carefully pry the fuel and brake lines away from the chassis. This is done to allow for the middle mount plate to be inserted between the chassis and brake lines. Please note the brake lines pass across the top of the chassis.



6. Insert the middle mount plate (item 3) between the chassis and brake / fuel lines in front of the fuel tank. Be careful not to damage any of these lines.
7. Return the fuel and brake lines to their original location.



8. Insert one of the T-bolts (item 4) into the hole at the rear of the chassis rail, plate first, and manoeuvre so the bolt is protruding from the hole.



9. Use a plastic bolt retainer (item 7) to hold the bolt in place while the rear of the side step is secured.



10. Lift the rear of the side step to meet the previously inserted T-bolt. Secure using a M10 hex nut, M10 spring and flat washer.

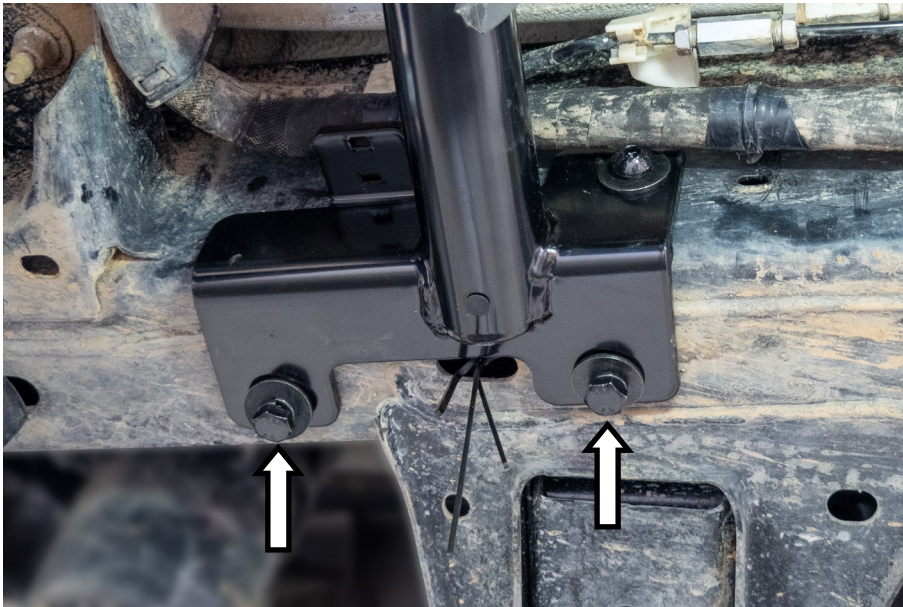


11. Lift the front of the side step to meet the chassis. You can use a piece of the foam packing to hold the side step up to the chassis.

12. With the side step in place, insert one of the nut plates (item 6) into the hole on the underside of the chassis. Bend the leg to allow the nut plate to sit flat against the chassis.

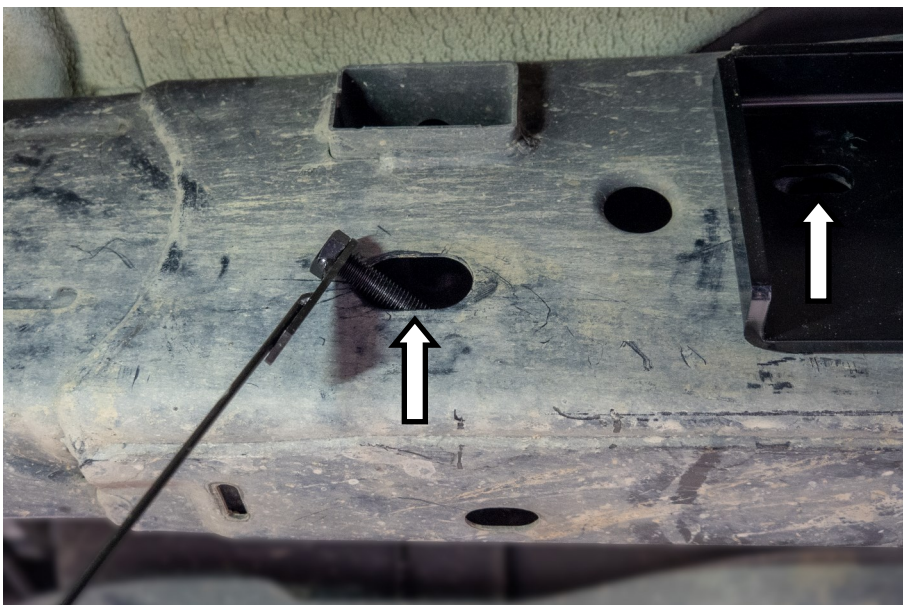


13. Secure the left hand side front mount to the side of the chassis rail using the M10 button head bolt, M10 spring and flat washer.



14. Insert two more M10 nut plates (item 6) into the hole in the bottom of the chassis.

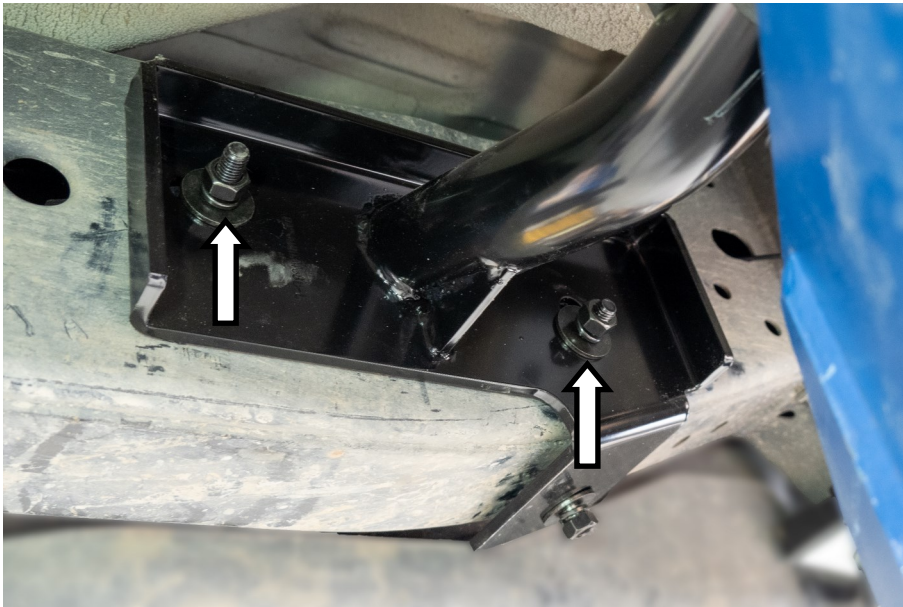
15. Secure the bottom of the front mount with two M10 hex bolts, M10 spring and flat washers.



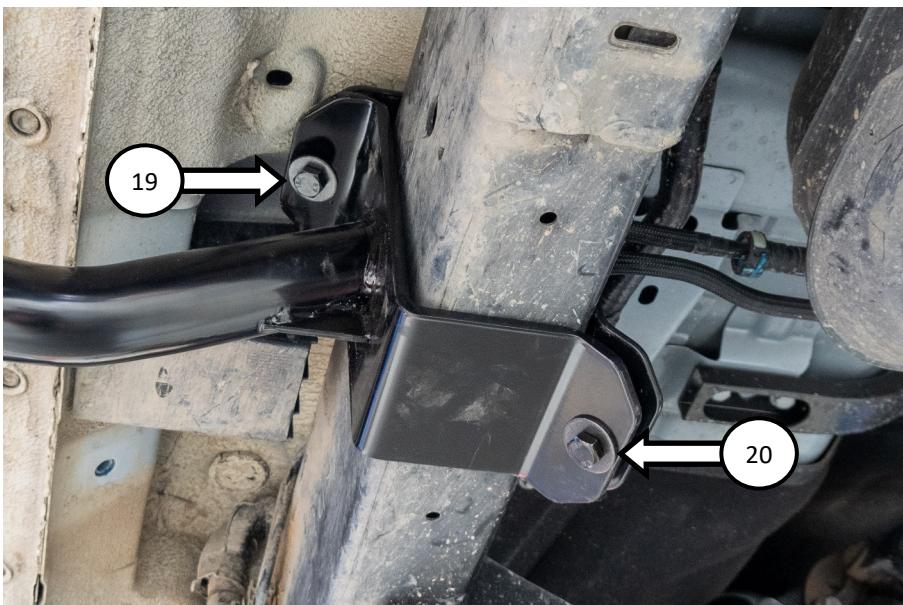
16. At the rear, insert one of the M10 bolts on wire (item 5) into the oval hole to the front of the rear mount. This is for the front hole of the rear mount.



17. Insert another M10 bolt on a wire into the oval hole to the rear of the mount.



18. Secure the two M10 bolts on wire with M10 hex nuts, M10 spring and flat washers.



19. Fit the centre mount to the middle mount plate. At the top use a M10 hex bolt, M10 spring and flat washer.

20. For the bottom, use a M10 hex bolt, two M10 flat washers, M10 spring washer and M10 hex nut.



- 21. Align the step so that it is parallel to the door sill.
- 22. Tighten all the fasteners to the correct torque.



- 23. At the front, secure the loom to the horizontal tab on the front mount with a cable tie.
- 24. Resecure the rest of the loom to the chassis.



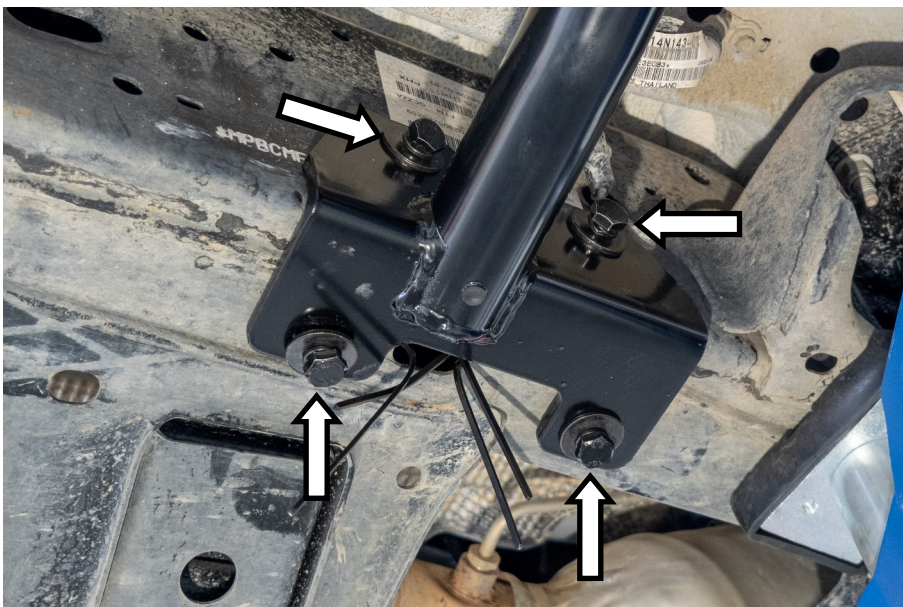
- 25. For the right hand side, the rear is the same as the left hand side. Start by inserting a T-bolt into the chassis.



26. Secure the T-bolt in place with a plastic retainer.

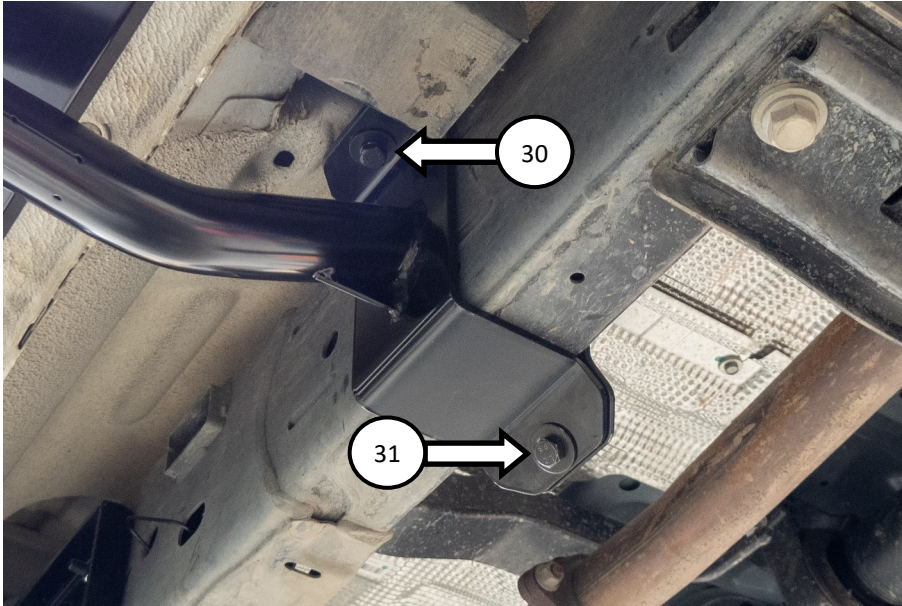


27. Insert the remaining two bolts on wire into the chassis. Secure the three bolts with M10 hex nuts, M10 spring and flat washers.



28. For the right hand side front, use the remaining four M10 nut plates, M10 hex nuts, M10 spring and flat washers.

29. Insert the nut plates into the hole in the underside of the chassis, secure with the above fasteners.



30. As per the left hand side, fit the middle mount plate to the centre mount. At the top use a M10 hex bolt, M10 spring and flat washer.

31. For the bottom, use a M10 hex bolt, two M10 flat washers, M10 spring washer and M10 hex nut.



32. Align the step so that it is parallel to the sill and tighten the fasteners to the correct torque.

